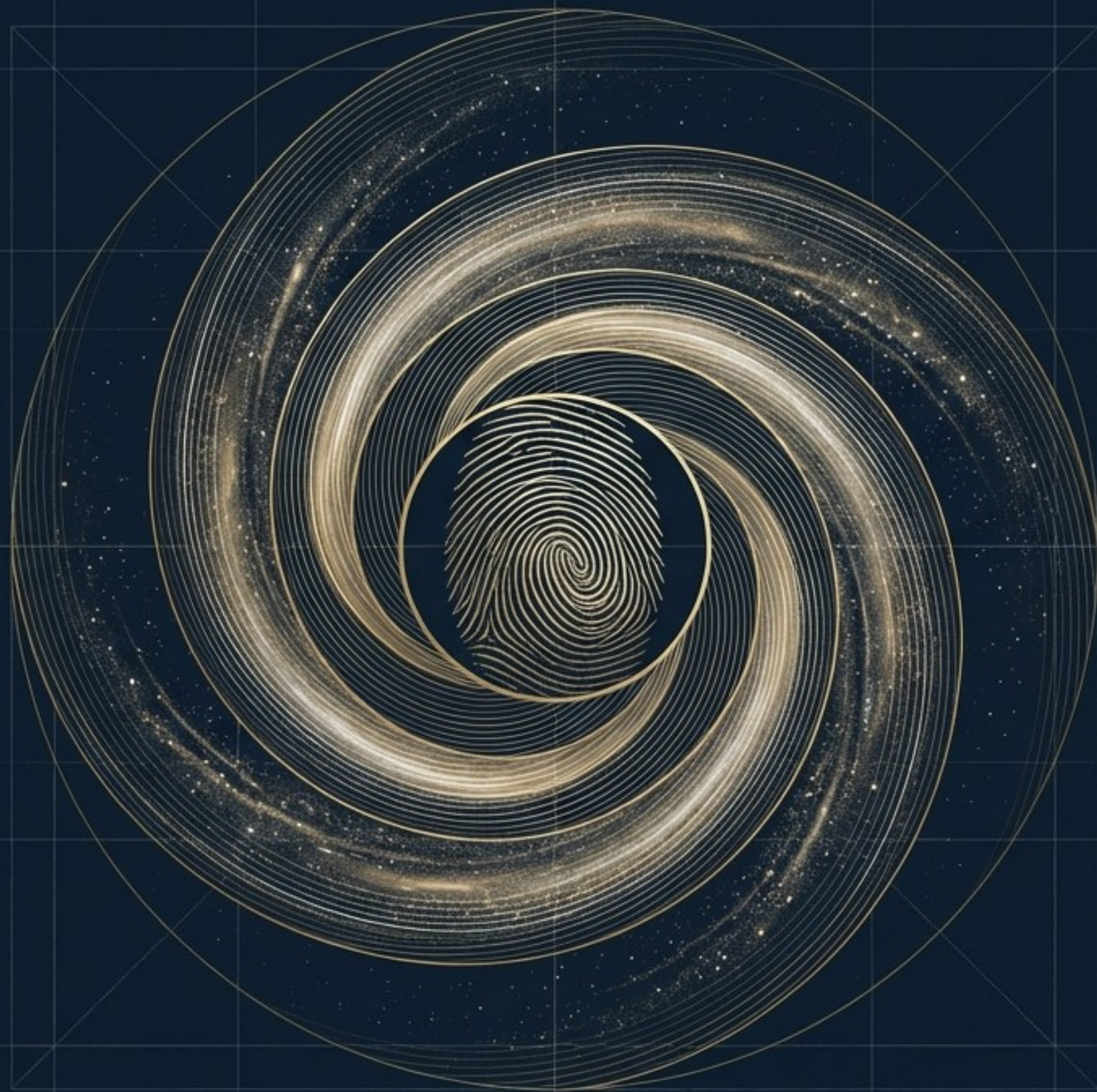


Beyond the 'Bag of Skin'

The Science and Spirit
of the Living Vortex



THE LUMINOUS VORTEX

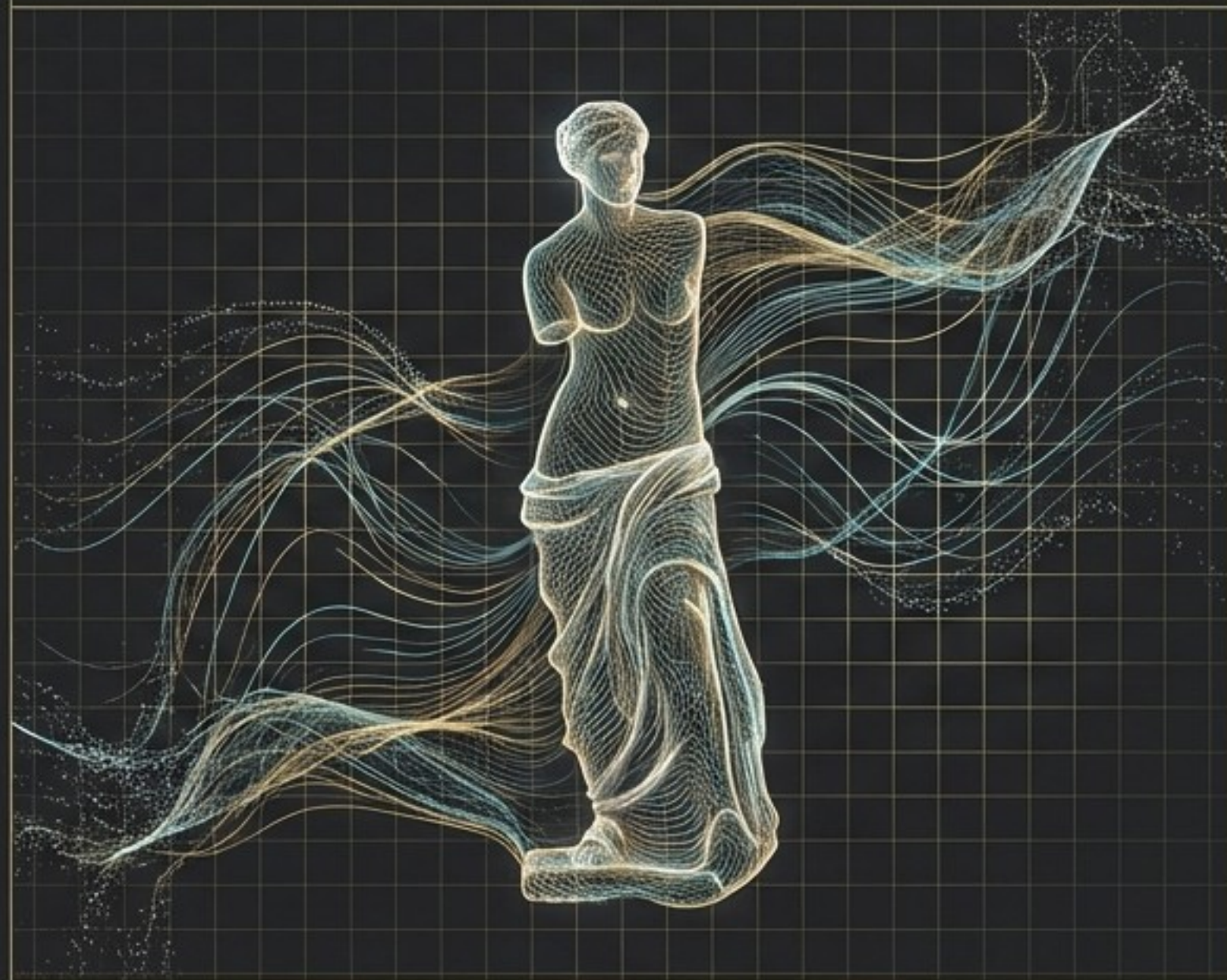
You are not a noun. You are a process.

We perceive ourselves as static, solid physical objects navigating a world of other solid things. This perception is a biological illusion. Rather than a fixed entity trapped in a "bag of skin," human biology is an ever-evolving expression of flow.

THE ILLUSION



THE REALITY



THE LUMINOUS VORTEX

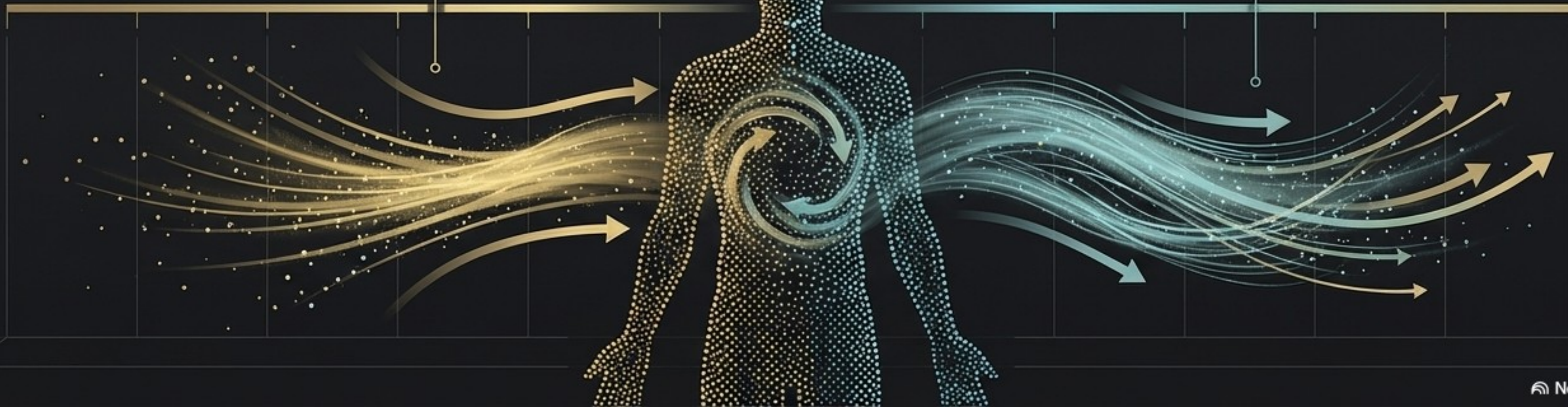
The 98% Rule: You are an open system.

Scientific data on "Total Atomic Renewal" reveals our physical bodies exist in a state of perpetual flux. 98% of the atoms currently in your body are replaced every single year. You are a biological transit point continually exchanging matter with the environment.

98%

JANUARY

DECEMBER



FORM AS EMERGENT FLOW

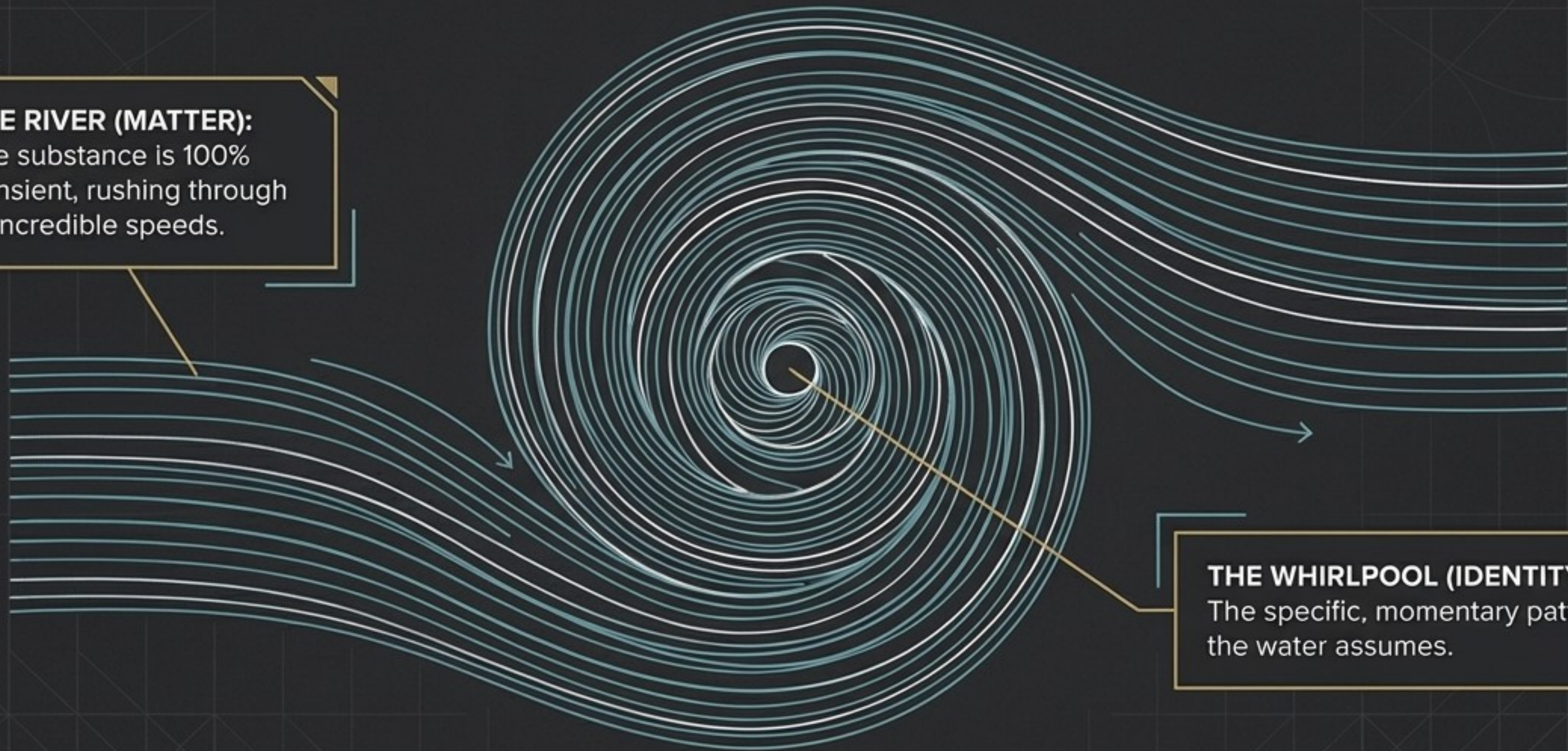
The whirlpool is not the water itself; it is the sustained pattern through which the water moves. We are that pattern. We are the 'Source in motion.'

THE RIVER (MATTER):





The substance is 100% transient, rushing through at incredible speeds.

THE WHIRLPOOL (IDENTITY):

The specific, momentary pattern the water assumes.

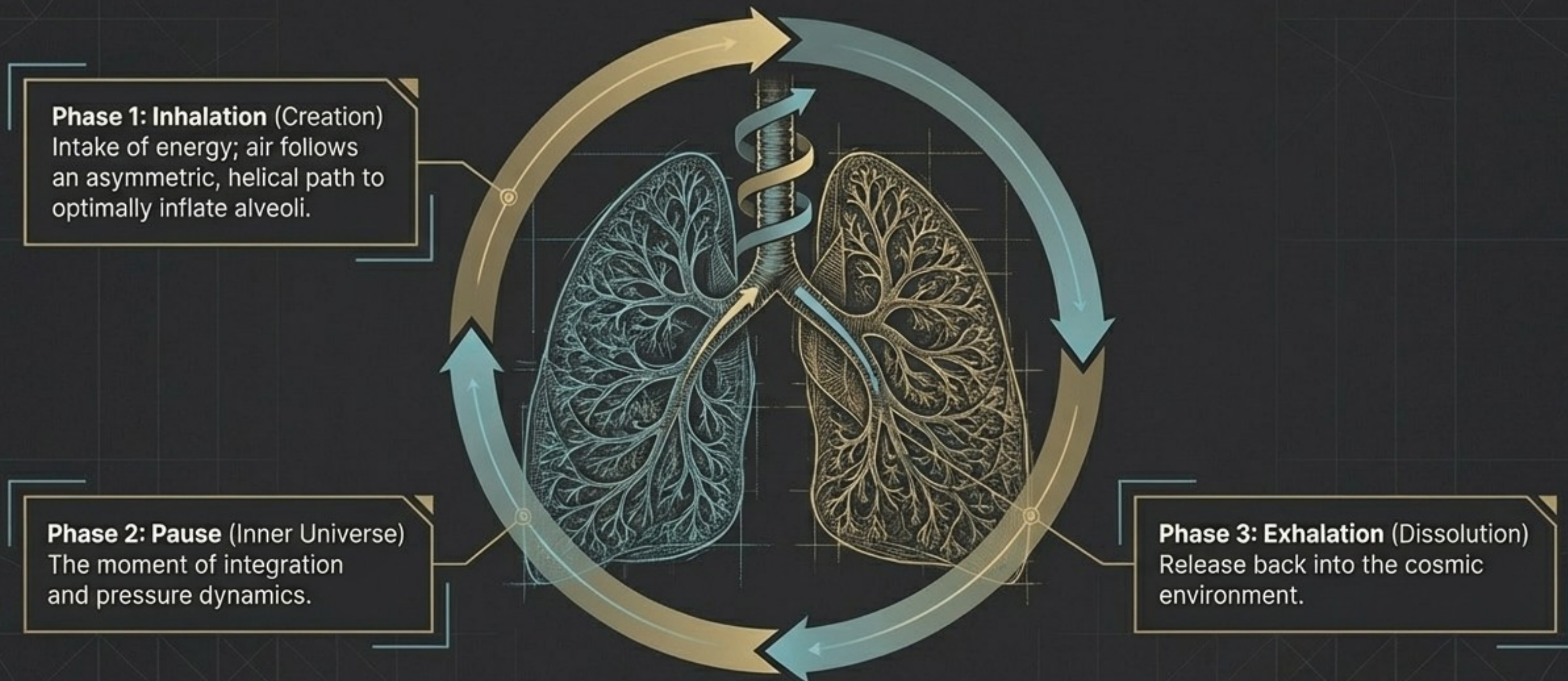


The Anatomy of a Verb: A Paradigm Shift

	The 'Noun' Paradigm (Static)	The ' Verb ' Paradigm (Dynamic)
IDENTITY	"Bag of Skin"	Living Vortex 
ANATOMY	Mechanical Piston Pump	Helical Torsion Engine 
MIND	Confined to the Skull	Distributed & Extended Network 
REALITY	Static Objects in Space	Continuous Flow / Prana 

The Architecture of Breath

Respiration proves we are not separate entities. It is the physical manifestation of the AUM cycle—a continuous, helical loop of creation, integration, and dissolution.



The Helical Heart

The heart is an active helical vortex. It utilises torsion to draw energy inward, acting as a rhythmic engine of flow. Your heartbeat is a whirlpool in the river of Prana.



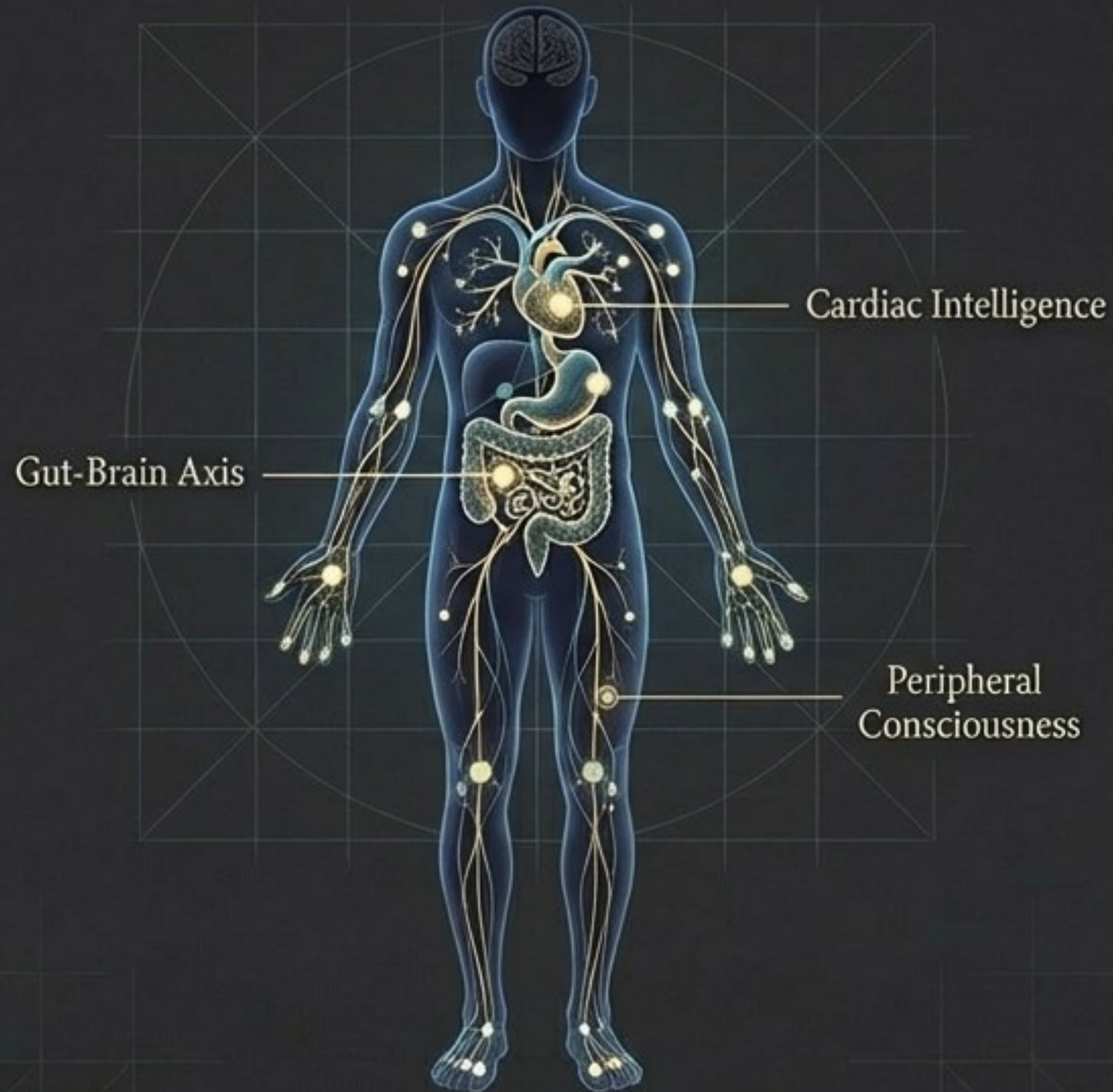
Outdated Mechanical Model



Vortex Torsion Engine

The Psychosomatic Network

Consciousness is not a centralised executive locked in the skull. Research into neuropeptides reveals them as 'molecules of consciousness,' linking every cell into a unified communication.



4E Cognition: A Mind Without Edges

The 'self' has no hard edges. Our cognitive architecture is a highly porous, extended network that physically merges with the world.



Embodied: Rooted in our cellular network

Embedded: Coupled inextricably with our physical environment

Enacted: Generated through our social interactions

Extended: Reaching outward through our tools and language

Epigenetic Mastery

You are not a victim of your DNA blueprints. Perception and environment control how genes are read. By observing somatic signals rather than reacting to them, you alter the input to your genes and rewrite your biological expression.



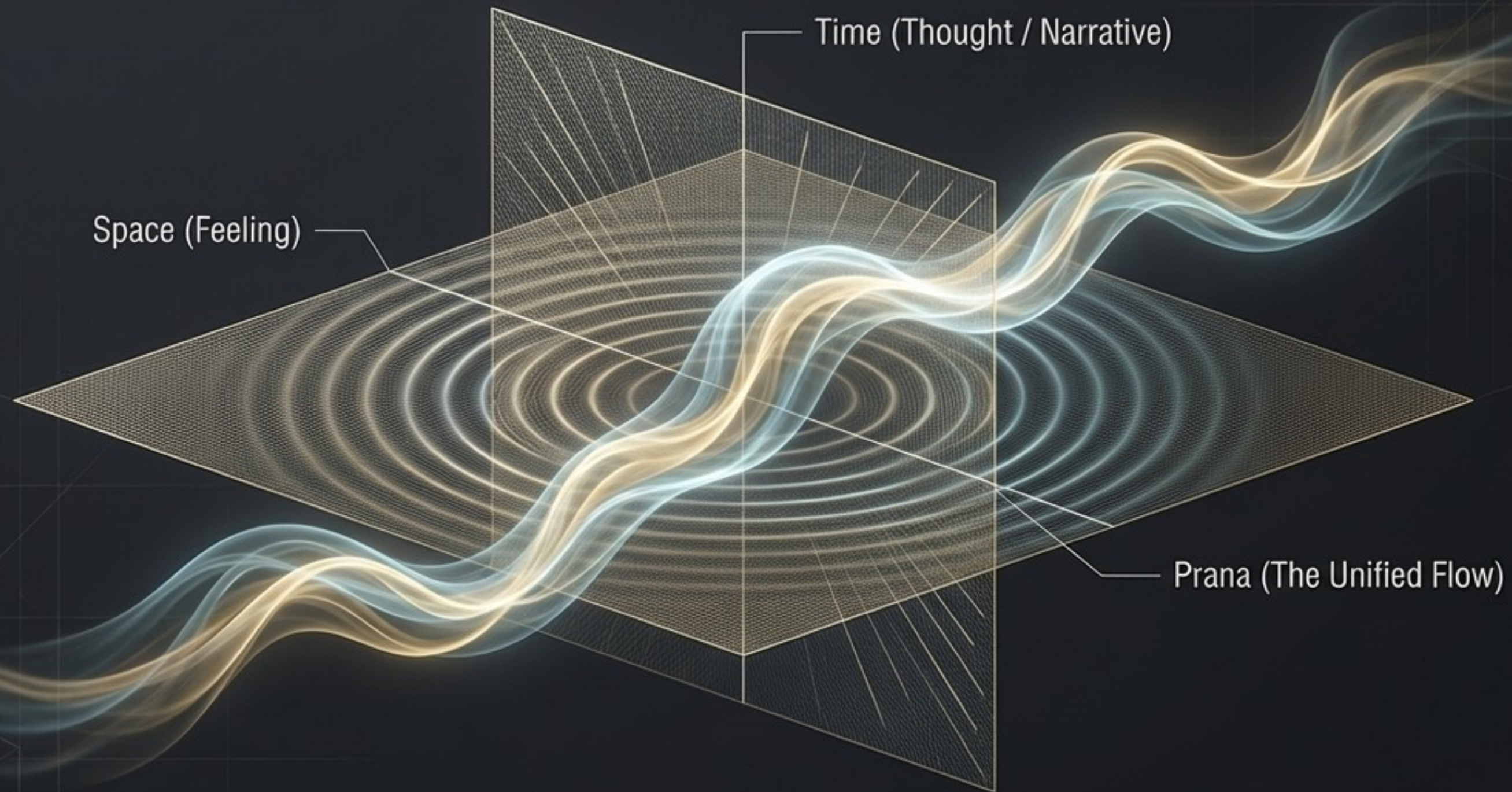
Autopoiesis: The Loop of Self-Generation

The human system is structurally open (matter rushes through us) but functionally closed (we maintain our autonomous form). We are self-organising processes that generate our own boundaries.



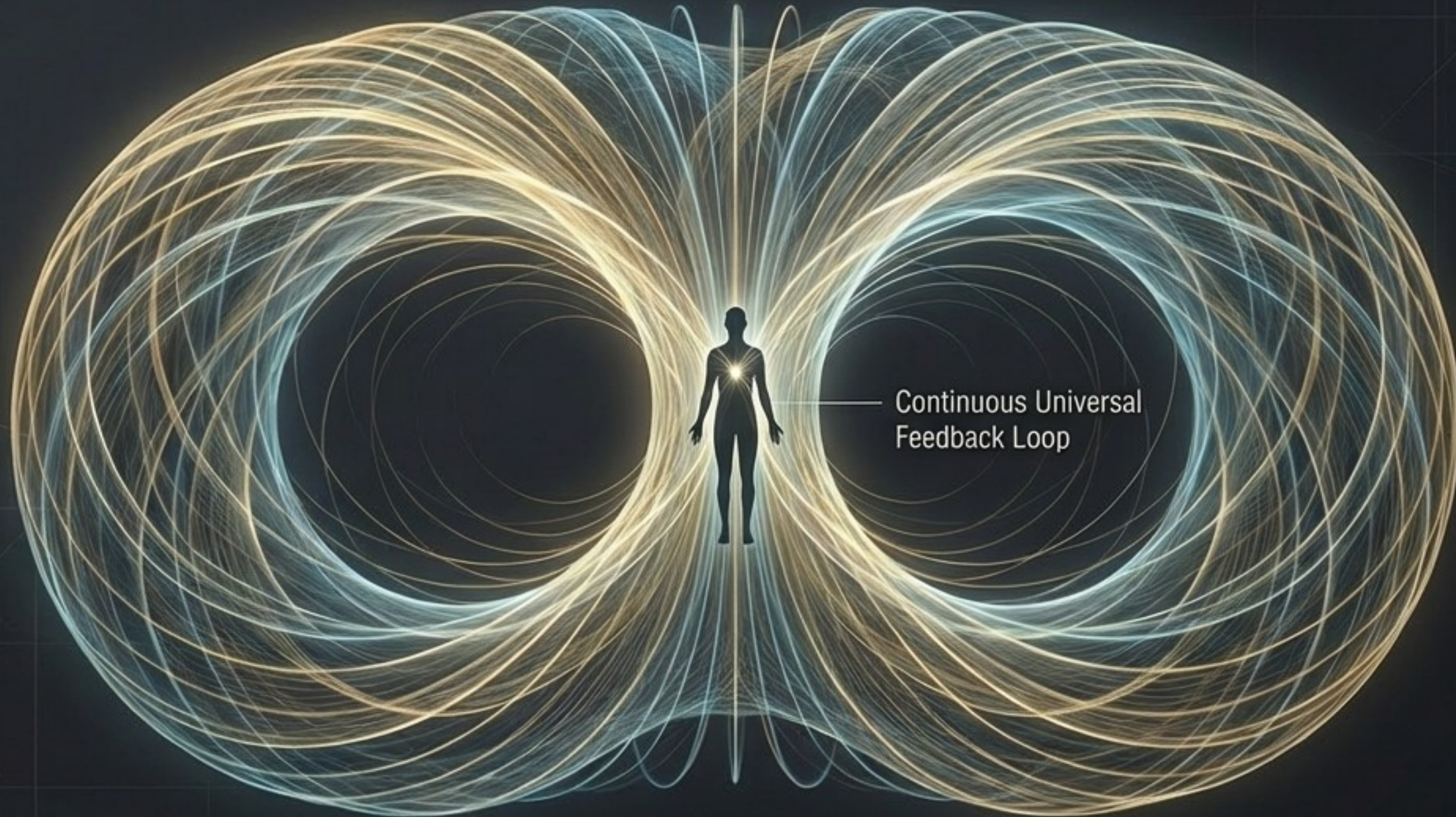
Space, Time, and Prana

Reality is not a collection of objects, but a unified flow of energy. Space and time are active manifestations of this singular flow. The fundamental rule of this cosmic architecture is Love in Action—a creative expression defined entirely by its movement.



The 'Ing-ing' of Existence

You are not a 'thing' existing within a universe. You are the continuous, rhythmic vibration of breathing, blood flow, and thought. You are a highly localised expression of the universal current.





Becoming the Aperture

The human being is an aperture through which the cosmos experiences itself. You are not a vessel navigating the current; you are the current; you are the current determining its own direction.