

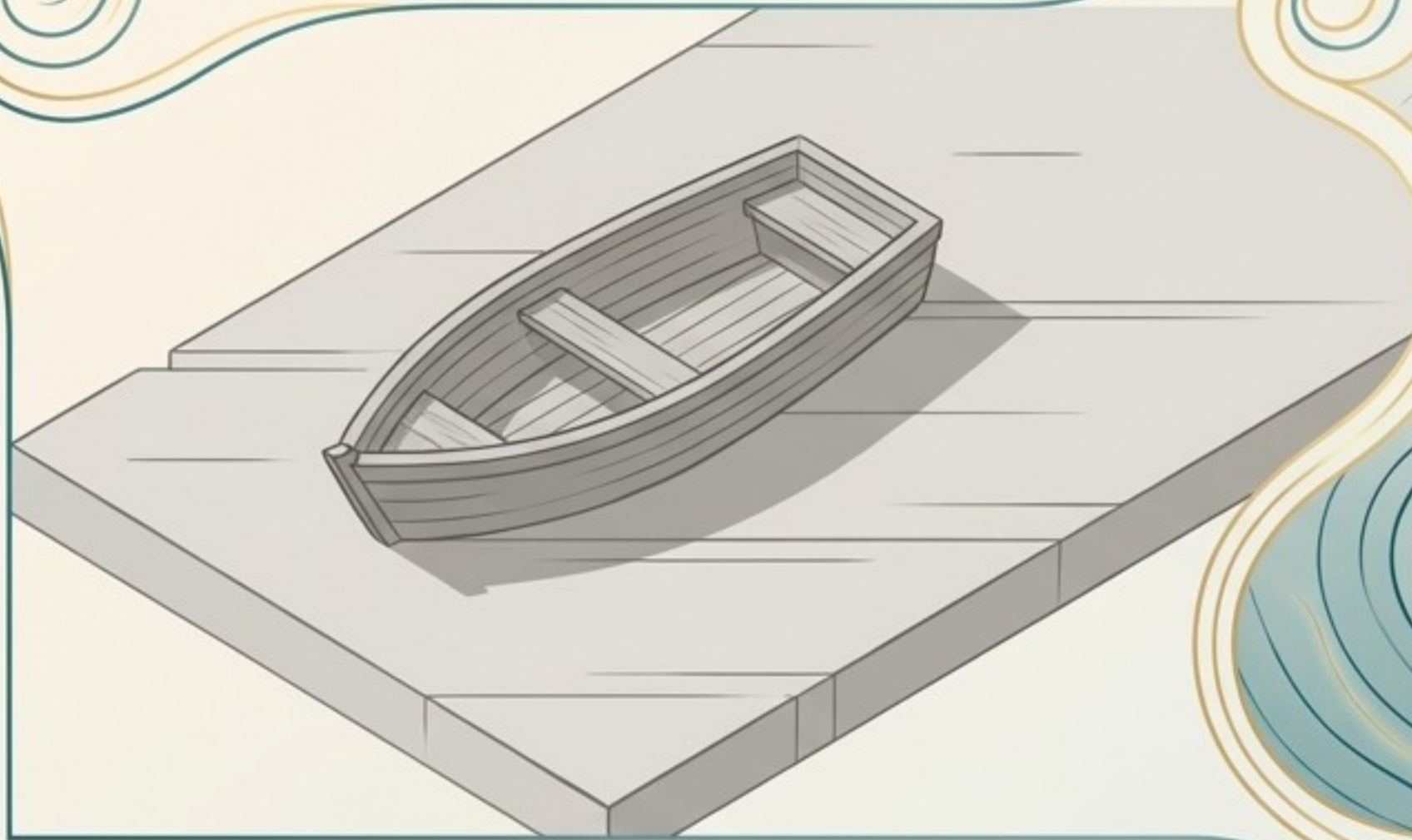


# Stop Being a Noun.

The biological and philosophical evidence that you are not a static object, but a majestic, continuous process.

An exploration of sacred fluidity, the helical heart, and the universal current of Love.

## THE ILLUSION OF SOLIDITY



## SACRED FLUIDITY



### The Grammar of Existence

The source of much human suffering stems from a simple linguistic and metaphysical error: we treat verbs as nouns.

### The Illusion of Solidity

We have been conditioned to view ourselves as fixed entities—passengers safely contained within a hull, travelling down the “river of life”, treating the environment as something happening to us.

### The Ego’s Trap

We use our names as labels for a finished product that must be protected and preserved. The ego clings to the “noun” because it fears the impermanence of the flow.

## THE ILLUSION OF THE NOUN (STATIC)

- **Identity:** The Boat Passenger observing the environment.
- **Mechanism:** The Mechanical Pump labouring to move parts.
- **Attachment:** Clinging to the debris and fighting the current.
- **Perspective:** A finished product defending a fixed boundary.

## THE REALITY OF THE VERB (DYNAMIC)

- **Identity:** The Whirlpool, an expression of the environment.
- **Mechanism:** The Helical Twist-and-Suck drawing in energy.
- **Attachment:** Yielding to the water and trusting the movement.
- **Perspective:** A continuous process of birthing and becoming.



1

## The Whirlpool Secret

If you look closely at a moving stream, a whirlpool appears to be a distinct "thing" with a clear shape. Yet, it has no independent substance.

2

## Total Dependence

It arises from the flow, is sustained by the rush of water, and eventually returns to the depths. If the river stops flowing, the whirlpool does not simply slow down; it instantly ceases to be.

3

## The Reality

You are not on the river; you are of the river. You are a temporary gathering of the infinite, sustained by the very thing you think you are observing.

# The Anatomy of Nonduality (“Not-Two”)



## The Form (Appearance)

The specific, spinning vortex. To our senses, it appears as a unique, bounded entity acting independently in space and time.

## The Action (Localised Love)

When universal energy takes a specific form, it does not cease to be a flow; it simply becomes localised. Just as a river must move to be a river, Love is defined by its active flow.

## The Substance (Reality)

100% River Water. There is no ‘whirlpool water’ that is distinct from ‘river water’. The One Substance of every atom and cell is identical to the universal current.

# Don't Mistake the Sediment for the Stream

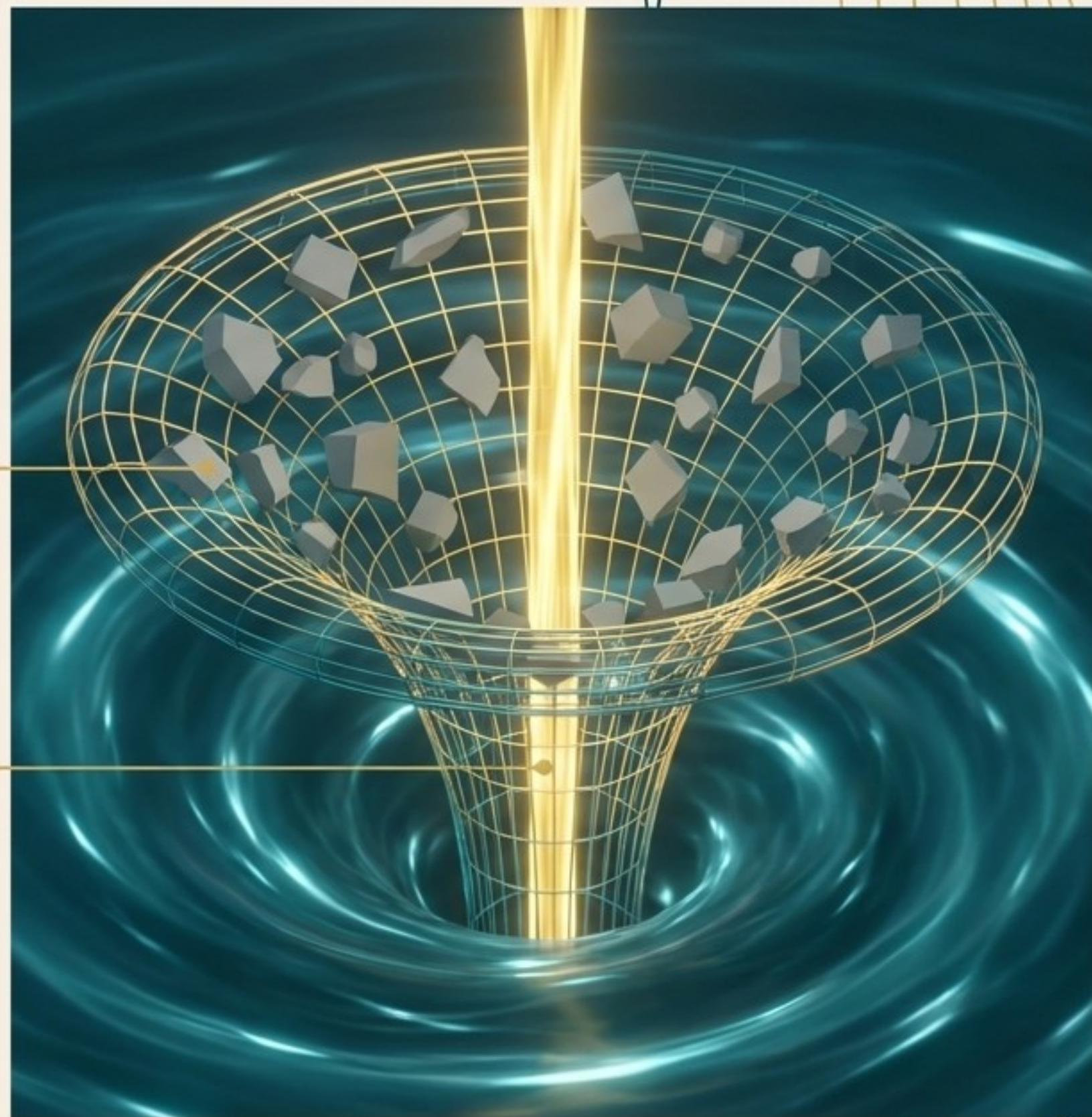
Every whirlpool inevitably catches materials in its spin. This 'Debris of Identity' gives your form its unique texture, but it is not your substance.

## The Jagged Shapes (The Debris)

Ego-driven narratives, historical grievances and personal trauma, physical traits and signs of ageing, and environmental 'twigs and leaves'.

## The Golden Flow (The Current)

The pure water carrying the debris. Profound suffering arises when we cling to the twigs and leaves, forgetting we are the current. You can appreciate the unique shape of your debris without forgetting your essence is the river.



# The Lineage of Constant Change



## Ancient Greece (Heraclitus)

**Symbol:** Fire

**Concept:** Panta Rhei (Everything Flows). 'No man ever steps in the same river twice.'

**Mechanism:** The Logos—a hidden harmony where the way up and the way down are identical; a process that only exists by consuming and changing.



## Buddhism (Anicca)

**Symbol:** Flickering Candle

**Concept:** The 'self' is a rapid succession of mind-moments.

**Mechanism:** Things exist only because conditions are currently meeting. Recognising there is no fixed essence leads to equanimity.



## Taoism (The Tao)

**Symbol:** Water

**Concept:** The organic, flowing whole of the universe. Naming it 'freezes' it.

**Mechanism:** Wu Wei (Effortless Action)—the art of sailing with the wind of change rather than rowing against it.

# Internal Evidence of the Universal Flow

This philosophy is not a mere abstraction; it is written into the very thrum of your pulse.  
Your physical existence is the bridge between the metaphor and the manifest.



## A Biological Stream

You do not have breath and blood flow; you are them. If this internal flow stops, the whirlpool of the individual dissolves.

## The Great Cycle

Indigenous cultures, from Plains Indians to Aboriginal Australians, visualise breath not as linear time, but as a repeating Spiral. You do not 'do' the breathing; the universal flow breathes through you.



# The Spiral Breath

Air does not travel in a straight line. It follows a complex vortex path through the trachea and bronchial tubes.

## Biological Efficiency

This helical movement distributes air more evenly during high-flow conditions (like exercise) and aids in the transport of mucus along the airway lining.

## Medical Application

Helical incentive spirometers are specifically designed to promote this vortex flow, helping patients achieve a 'sustained maximal inspiration' (SMI) and better inflate the alveoli. The spiral is a functional necessity.

## Challenging the Mechanical Heart

We are often told the heart is an industrial, mechanical pump—a -rhythmic piston of muscle labouring to circulate blood.

## A Helical Space-Time Event

In the silent theatre of the womb, over just 50 days of embryology, the human heart repeats a billion-year evolutionary journey. It transforms from a simple tube into a complex helix.

## Energy-in-Formation

The heart is not a pump; it is the biological bridge where the Divine Word is uttered into the world of matter. It is a physical 'verb' through which the universe maintains its pulse.





## The Single Continuous Rope

Anatomically, the heart is a single muscular ribbon (the Myocardial Ventricular Band) that twists and loops upon itself, following a universal spiral 'Master Plan'.

## The 60-Degree Secret

The muscle fibres cross at a specific 60-degree angle, creating a 'Gothic' geometry –the heart's aspirational arch of efficiency.

When the heart loses this and reverts to a 'Romanesque' horizontal alignment, it becomes earth-bound and loses its spiritual efficiency.

## The 'Twist-and-Suck' Cycle

This geometry enables a powerful helical untwisting that actively sucks 90% of the blood into the chambers. It creates a biological vacuum—the physical complement to the soul's active attraction toward its Source.

# Om Written in Flesh: The heart's rhythms echo the primordial vibration (A-U-M), mapping consciousness onto blood flow.

## A (Extension / Waking State):

The outward thrust of blood and expansion of internal space; the manifestation of the physical world.

## Silence (Turiya) & The Bindu:

Surrounding this is Turiya, the unmanifest ground of being. The actual heartbeat is the Bindu—the non-linear flash of pure consciousness in the timeless 'Now'.

## U (Sequence / Dreaming State):

The 'pause' where flow is processed sequentially along the helical rope; the subtle mental world.

## M (Dissolution / Deep Sleep):

The contraction where the individual whirlpool resolves back into the infinite river of the Source.

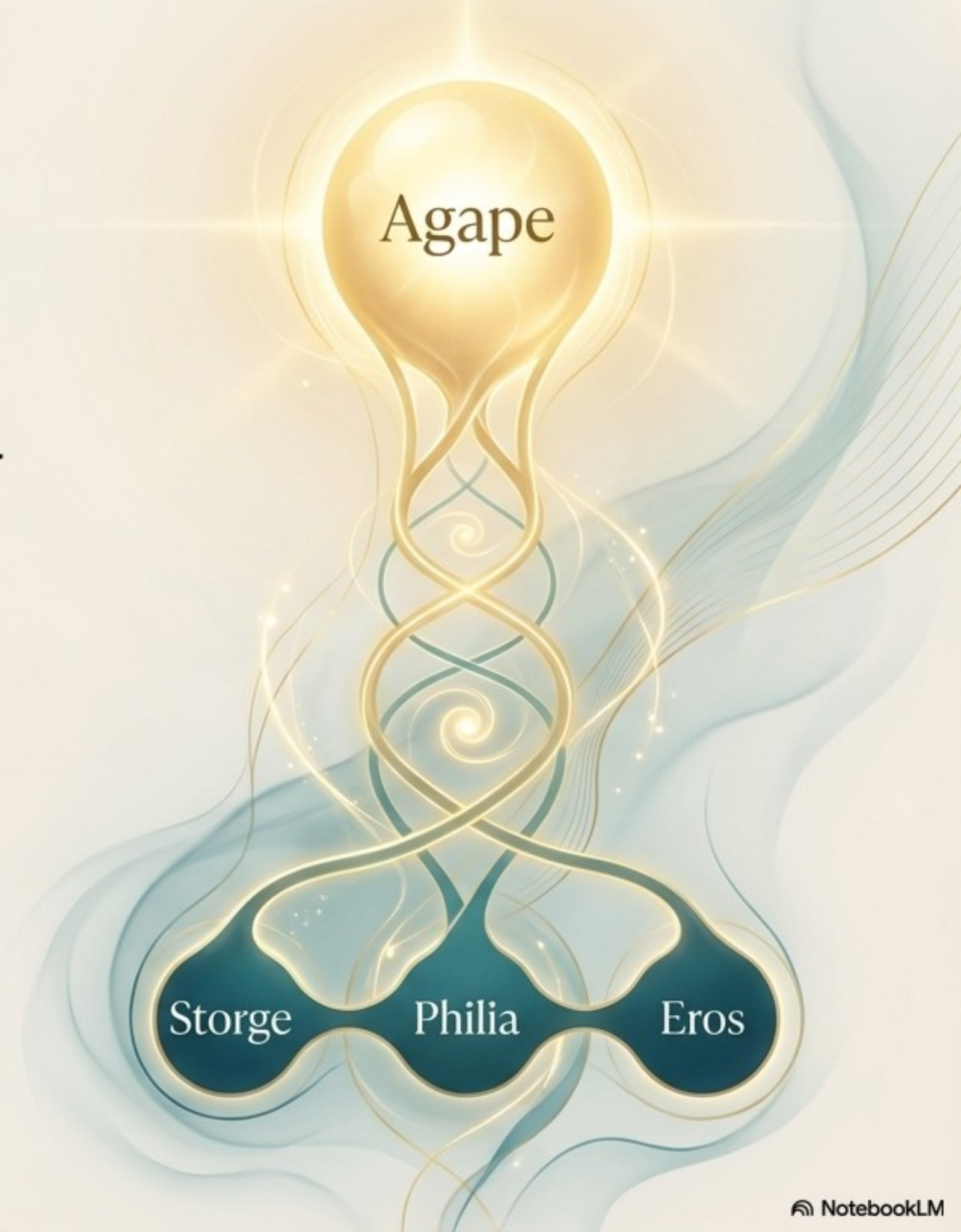
# Love is a Verb: The Power of Active Choice

**The Impetus:** Love is not a static feeling; it is an active choice (consistent support, daily sacrifice). It is the Central Neutral Current that balances the polarity of our individual whirlpools (lokas and talas).

## Transmuting the Four Loves (C.S. Lewis)

**The Natural Loves (Storge, Philia, Eros):** Friendship, family, and romantic passion serve as the 'school of virtue'. Yet, they are not self-sufficient.

**The Divine Current (Agape / Charity):** The selfless, unconditional 'God-love'. Natural loves must be subordinated to Agape to prevent them from becoming 'demonic' or self-serving. Agape allows the soul to escape the illusion of separateness.





## The Universal Blueprint:


**The Macro (The Cosmos):** The universal law of Love. The Mighty Eros that stirred Chaos to initiate manifestation, following the Master Plan of spirals.

**The Meso (The Whirlpool):** The individual form. The localised expression of the river (Chesed), maintained by the Central Neutral Current of Love balancing positive and negative spins.

**The Micro (The Flesh):** The helical heart and the spiral breath. The physical 60-degree twisting mechanism that sucks the universe's energy into localised form.

### The Insight:

The internal and external are the exact same substance, governed by the exact same laws of motion.



## Entering the Stream

Shifting your perspective from a 'static object' to the 'Energy of Constant Change' is the ultimate act of liberation.

## Letting Go

When you stop protecting a fixed identity, you stop fighting the current of existence. You realise you do not need to defend your form against the water—you are the water.

## The Final Truth

You are no longer a victim of time; you are the current itself. Individual forms appear different, yet the One Substance of everything is Love.